

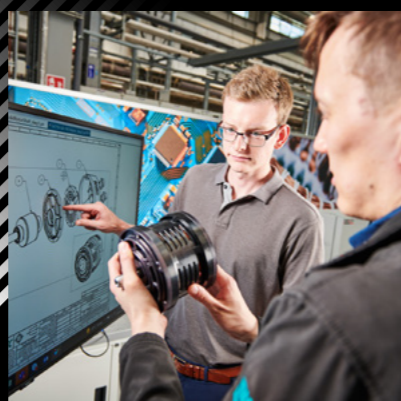


DEVELOP, UPSKILL AND FUTURE-PROOF YOUR WORKFORCE

WITH OUR ADVANCED UPSKILLING TRAINING COURSES



**PROVIDING THE ADVANCED MANUFACTURING SKILLS NEEDED
TO DEVELOP THE TECHNOLOGICAL WORKFORCE OF TODAY AND TOMORROW**



INTRODUCING

mtc | Training

MTC Training's mission is to create the next generation of engineering talent while upskilling and reskilling existing workforces, ensuring UK advanced manufacturing businesses have the expertise they need to continue to make the Great British manufacturing industry globally competitive.

Offering specialist training programmes designed to help close the skills gap, MTC Training is supporting industry to accelerate innovation through technology.

The world-class training programmes on offer include commercial CPD training and graduate development programmes to ensure that you and your staff stay on track with the skills you need today and in the future.

MTC Training is part of the Manufacturing Technology Centre (MTC), a member of the UK's High Value Manufacturing Catapult that was established in 2010 to accelerate innovation in manufacturing processes and technologies in partnership with industry and academia.

This means MTC Training is at the forefront of technological advancements in the engineering and manufacturing sectors, with access to the very latest technologies and equipment in state-of-the-art workshop spaces across our sites in Coventry, Oxfordshire and Liverpool.

Our partnerships with MTC's members provide unique working environments for our manufacturing experts. Their support, combined with the continued partnership and long-term investment from Lloyds Bank, ensures that our learners and their employers benefit from this cutting-edge expertise, alongside unrivalled access to world-leading equipment and advanced engineering technologies.

MTC Training supports companies and organisations of all sizes, from start-ups to SMEs and OEMs. We will help you develop the skills and capabilities your workforce needs to keep your business, and the UK manufacturing sector, competitive on the global stage.

SUPPORTED BY

LLOYDS BANK



WORLD CLASS TRAINING AND WORKSHOP FACILITIES

Working with MTC Training ensures access to some of the UK's most advanced engineering facilities.

Our facilities boast world-leading manufacturing and engineering equipment and advanced technologies, alongside state-of-the-art teaching spaces to inspire and support all of our learners to upskill and continue their professional development.

mtc
LIVERPOOL



MTC LIVERPOOL LIVERPOOL SCIENCE PARK, LIVERPOOL

The MTC Liverpool facility, based at Liverpool Science Park within the Knowledge Quarter, is supporting the development of skills, increased productivity and growth for the UK's advanced manufacturing sectors with its world-class equipment.

The technology facility is just 10 minutes walk from Liverpool Lime Street Rail Station, and its central location offers unique opportunities for businesses and individuals within the region.

mtc
COVENTRY



ADVANCED MANUFACTURING TRAINING CENTRE (AMTC) ANSTY PARK, COVENTRY

We have invested more than £36 million in training and facilities at MTC over recent years. Central to this investment is the Advanced Manufacturing Training Centre.

Built in 2015, this state-of-the-art building houses the latest in machine tools and new technologies to support the learning and development of engineers and technicians of today and the future.

The building's ultramodern conferencing and events facilities alongside its high-spec meeting spaces provide the perfect venues for our training courses, workshops and seminars.

**OAS
OXFORD**



OXFORDSHIRE ADVANCED SKILLS (OAS), UKAEA CULHAM SCIENCE CENTRE, OXFORD

Opened in September 2019, the OAS facility located on UKAEA's Culham Science Centre is run in conjunction with MTC Training. The state-of-the-art training centre offers outstanding learning facilities and some of the UK's most advanced engineering and manufacturing equipment covering a wide range of engineering and technology disciplines.

The centre already supports hundreds of advanced engineering apprentices, and continues to host MTC Training courses as we upskill employers' workforces at all levels, from first year apprentices to expert advanced technicians.

WHO ARE THE COURSES FOR?

MTC Training provide learning solutions designed to help develop, enable and inspire your workforce, providing tangible business improvements and a return on investment.

ENGINEERS AND TECHNICIANS

Our courses keep Engineers and Technicians ahead of the competition by targeting both existing and emerging manufacturing technologies and processes.

GRADUATES

We work with organisations to create bespoke graduate programmes that build upon university qualifications to further develop practical skills and application.

LEADERS AND MANAGERS

Invest in the long-term success of your business with courses designed to enable leaders, managers and mentors to support your workforce to excel and lead your business into the future.



CONTACT US TO FIND OUR MORE

For more information, just email training@the-mtc.org or call us on 02476 701774



Amazing course, superb facilities and really engaging tutors. I learnt so much, all of which was relevant to my job and just genuinely interesting. I'd highly recommend!

Rebecca Simpson
Digital Manufacturing course attendee

WHY LEARN WITH MTC TRAINING?



LEARN FROM INDUSTRY-LEADING ENGINEERS WITH FIRST-CLASS EXPERTISE

The very best engineers work in collaboration with our course designers and trainers to bring you the most effective training programmes.



FLEXIBLE DELIVERY SOLUTIONS

With sites in Coventry, Liverpool and Oxfordshire we also have the ability to deliver our training onsite to a wide audience and our face-to-face courses are easily accessible to businesses across the country.



INDUSTRY-WIDE RECOGNISED QUALIFICATIONS

Where appropriate, our courses are accredited with nationally recognised bodies and are regularly reviewed to stay ahead of technological advances.



FUTURE-FOCUSED

Using unique insight from our expert Training Services Team, our courses have been developed to not only provide the skills required for today, but also to support the workforce with the technological advancements of the future.

DELIVERY METHODS TO SUIT YOU

All of our courses have been designed to incorporate a selection of delivery methods, to ensure we can meet your training needs irrespective of your location and schedule.



FACE-TO-FACE

Our face-to-face courses offer the opportunity to get practical experience and 1-on-1 advice from our expert trainers, allowing learners to make the most of their sessions and ensuring the successful transfer of learning into the workplace.



E-LEARNING

Our e-learning courses are designed to give learners the flexibility to learn anywhere, at any time. Our courses are self-paced and our highly interactive sessions ensure learners remain engaged and motivated.



ONLINE & LIVE

Our 'Online & Live' courses bring our industry leading manufacturing courses to an accessible digital platform. The course format provides technology inspired, fully interactive, live trainer-led education, centred around engineers looking to build their experience and advanced manufacturing skills. The learner to trainer ratio is capped at 10:1 to maximise engagement and interaction while encouraging group working and peer-to-peer communication and support.



BESPOKE TRAINING SOLUTIONS

We know that every organisation has its own unique needs, goals, and objectives. That's why we can work with you to develop a bespoke programme that focuses the learning outcomes on your specific requirements. We'll embed your organisation's values, competencies, and working practices with an approach that has great impact and immediate relevance. To talk about how we can tailor our courses to meet your needs, email training@the-mtc.org or call 02476 701 774.



ON-SITE

Our trainers are able to deliver sessions at your workplace. This means your employees are able to develop their skills in their real work environment which is more convenient for you and your employee.



LICENSED PACKAGES

We offer organisations a license to our e-learning courses, so they can distribute the content to their employees whenever they need to, without the need to purchase individual courses each time. Contact us for more information.



BLENDED LEARNING

Our blended learning courses offer the ultimate flexibility by seamlessly integrating classroom sessions, interactive workshops, workplace coaching, convenient online and live sessions, and self-paced learning. This flexibility ensures a comprehensive and impactful educational experience that caters to your schedule while accommodating various learning styles.

VIEW OUR COURSE CALENDAR



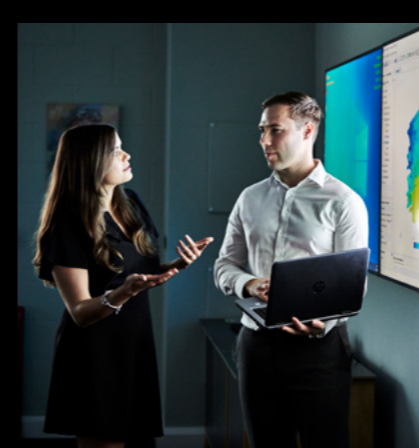
View our course calendar to take a look at our upcoming face-to-face courses



OUR SPECIALIST SUBJECT AREAS

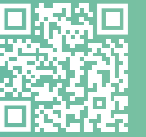
As advanced manufacturing specialists, we offer courses across a broad range of technologies and themes to support learners at any level of career, experience and expertise.

From introductions to the principles of the latest innovations, through to detailed technical upskilling for more experienced engineers looking to specialise as advanced experts in specific technologies, MTC Training will deliver the skills and knowledge your business needs.



VIEW OUR COURSES

View our full range of training courses and options on our website



The Introduction to Additive Manufacturing course is a must do for anyone interested in Additive Manufacturing. The course involved several of the MTC's Additive Manufacturing experts, who provided excellent insight into this emerging technology

Additive Manufacturing course delegate

ADDITIVE MANUFACTURING

The MTC is home to the National Centre for Additive Manufacturing (NCAM) and our courses have been designed in partnership with NCAM's experts, who have shared their knowledge to help you quickly get to grips with this disruptive technology. Whether you're starting your AM journey and want to understand how AM fits within your existing processes, or you're a design engineer who needs to know how to apply process-specific design rules for particular types of AM, our CPD-accredited courses will help you harness the power of AM.

FEATURED COURSES

ADVANCED INTRODUCTION TO ADDITIVE MANUFACTURING

Face-to-face 1 Day

FOUNDATION CERTIFICATE IN ADDITIVE MANUFACTURING

Blended Learning 11.5 Hours

PRACTICAL INSIGHT INTO METAL POWDER BED FUSION

Face-to-face 4 Days

AUTOMATION AND ROBOTICS

Investing in automation is proven to increase companies' competitiveness, productivity and profitability. Yet the UK still lags behind in the uptake of this innovative area. Our suite of courses supports companies of all sizes to understand the business case, opportunities and required skills to effectively invest in and successfully implement new automated and robotic systems and processes in your business.

FEATURED COURSES

INTRODUCTION TO ROBOT PROGRAMMING

Face-to-face 5 Days

IMPLEMENTING AUTOMATION & ROBOTICS

E-learning 1 Hour

AUTOMATION BEGINNER BOOTCAMP

Face-to-face 5 Days

SPACE

With an annual value of over £16bn and employing more than 45,000 people, space is one of the fastest growing sectors in UK manufacturing. It's also key to the government's target for growth, as the UK looks to advance its position in the new global space race. Our suite of courses supports cross-sector skills development in a range of innovative technologies. Our aim is to support the progression of the Third Space Age by enabling UK space-focused manufacturers and their supply chain to upskill in a series of space-specific advanced engineering technologies.

FEATURED COURSES

SPACE GRADUATE DEVELOPMENT PROGRAMME

Blended Learning 5 Days

SATELLITE MANUFACTURE, ASSEMBLY, INTEGRATION AND VERIFICATION

Blended Learning 1 Day

SPACECRAFT PLATFORM SYSTEMS AND DESIGN

Blended Learning 1 Days

DIGITALISATION

With the exponential growth of data, the ability to analyse, interpret, and apply insights has become a critical skill within the manufacturing industry. Our digitalisation courses ensure individuals and businesses can stay ahead of the curve, unlocking new possibilities and staying competitive in an increasingly digital world. Our collaboration with BPP, along with their skilled team of data scientists, also enables us to provide a variety of courses tailored to rapidly enhance data science expertise.

FEATURED COURSES

DIGITALISING YOUR MANUFACTURING BUSINESS CERTIFICATE

E-learning 4.5 Hours

DATA SCIENCE COLLECTION IN PARTNERSHIP WITH BPP

Blended Learning 14 Days

ENGINEERING ESSENTIALS

Stay ahead of the curve in modern engineering with our Engineering Essentials suite of courses.

Enhance your workforce's technical skills and broaden their knowledge of modern mechanical engineering principles and techniques. Our comprehensive offerings enable your workforce to update their skillset, ensuring that your engineering processes are not only safe and cost-effective, but also aligned with the latest industry standards.

FEATURED COURSES

INTRODUCTION TO PLC PROGRAMMING

Face-to-face 3 Days

PANEL WIRING AND ELECTRICAL CONTROL

Face-to-face 4 Days

DESIGN TO MANUFACTURE GRADUATE DEVELOPMENT PROGRAMME

Blended Learning 5 Days

BUSINESS ESSENTIALS

Our training courses are designed to equip both existing and aspiring leaders with the knowledge and skills they need to drive efficiency and boost productivity throughout your organisation. Whether you're looking to improve your team's mentoring and leadership skills, streamline your workflow processes, or implement new technologies more effectively, our courses can help you achieve your goals.

FEATURED COURSES

MENTORING IN THE WORKPLACE

Face-to-face 1 Day

SUSTAINABILITY IN PROJECTS

E-learning 1.5 Hours

mtc | Training

Find out more about our individual training courses, apprenticeships and bespoke training design capabilities to support, develop, upskill and future-proof your workforce.

email training@the-mtc.org,

call us on **02476 701 774**


or visit www.the-mtc.org/training



 @_MTC_Training

 @MTC Training

 @_MTC_Training

 company/MTCTraining



2741564
Carbon Captured Material